

Snohomish United Black B01

Snohomish Youth SC

Snohomish, WA

B01 total strength=957

attack=2.31 defense=1.28

fall league = RCL B01 Div 2, Spr RCL B01 Div 2

alt names used:

SNOHOMISH YOUTH SOCCER BU01 BLACK

SNOHOMISH UNITED BU01 BLACK A (WA)

SNOHOMISH UNITED BLACK A

Venues played:

Snohomish United Invit Gold U12

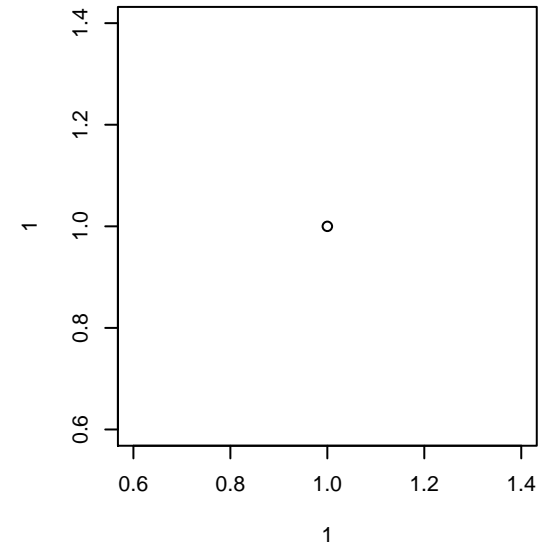
Nike Crossfire Challenge Gold U12

Bigfoot Gold U12

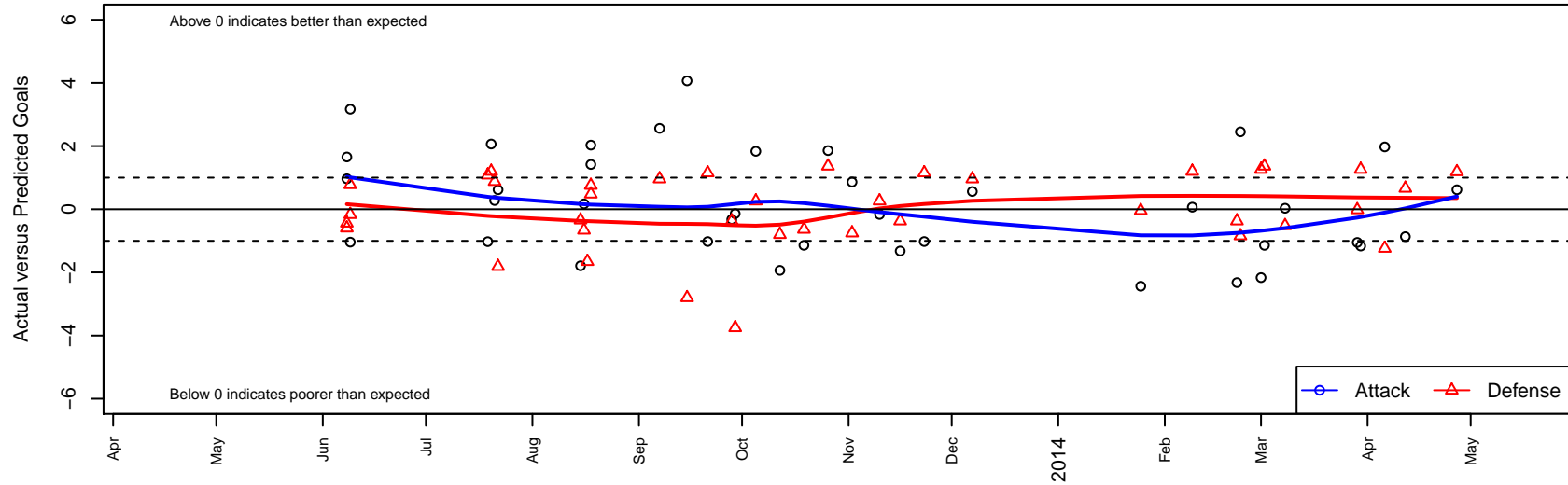
RCL B01 Div 2

Spr RCL B01 Div 2

WYS Championship B01



Snohomish United Black B01
 Dots are actual minus expected GF (blue circles) and GA (red triangles).
 Blue line is smoothed change in attack strength. Red is smoothed change in defense strength.



	date	home		away		venue	pred.home	pred.away
26934	2014-04-27	PacNW Maroon B01	3	Snohomish United Black B01	2	WYS Championship B01	4.19	1.38
26053	2014-04-12	Snohomish United Black B01	0	FC Alliance A B01	2	WYS Championship B01	0.87	2.66
25883	2014-04-06	Crossfire Premier B B01	3	Snohomish United Black B01	4	WYS Championship B01	1.76	2.03
25529	2014-03-30	FWFC Blue B01	0	Snohomish United Black B01	2	WYS Championship B01	1.26	3.16
25455	2014-03-29	Snohomish United Black B01	0	WPFC Black B01	4	WYS Championship B01	1.05	3.98
23965	2014-03-08	Snohomish United Black B01	2	NWN Red B01	2	Spr RCL B01 Div 2	1.97	1.48
23709	2014-03-02	Seattle United Tango B01	0	Snohomish United Black B01	1	Spr RCL B01 Div 2	1.36	2.14
23476	2014-03-01	FWFC Blue B01	0	Snohomish United Black B01	1	Spr RCL B01 Div 2	1.26	3.16
23248	2014-02-23	Snohomish United Black B01	5	PacNW Blue B01	2	Spr RCL B01 Div 2	2.55	1.16
22990	2014-02-22	Snohomish United Black B01	0	WPFC White B01	2	Spr RCL B01 Div 2	2.32	1.63
22379	2014-02-09	Snohomish United Black B01	2	Whatcom Rangers Gold B01	1	Spr RCL B01 Div 2	1.93	2.20
21717	2014-01-25	Westsound FC Red B01	1	Snohomish United Black B01	1	Spr RCL B01 Div 2	0.96	3.44
20585	2013-12-07	Westsound FC Red B01	0	Snohomish United Black B01	4	RCL B01 Div 2	0.96	3.44
19110	2013-11-23	Snohomish United Black B01	3	WA Rush B01	0	RCL B01 Div 2	4.02	1.15
18450	2013-11-16	WPFC White B01	2	Snohomish United Black B01	1	RCL B01 Div 2	1.63	2.32
18047	2013-11-10	FWFC Blue B01	1	Snohomish United Black B01	3	RCL B01 Div 2	1.26	3.16
16736	2013-11-02	SSC Shadow A B01	3	Snohomish United Black B01	3	RCL B01 Div 2	2.25	2.14
15848	2013-10-26	Snohomish United Black B01	4	Seattle United Tango B01	0	RCL B01 Div 2	2.14	1.36
14923	2013-10-19	Seattle United Tango B01	2	Snohomish United Black B01	1	RCL B01 Div 2	1.36	2.14
13869	2013-10-12	Whatcom Rangers Gold B01	3	Snohomish United Black B01	0	RCL B01 Div 2	2.20	1.93
12847	2013-10-05	Snohomish United Black B01	5	FWFC Blue B01	1	RCL B01 Div 2	3.16	1.26
12326	2013-09-29	Snohomish United Black B01	2	SSC Shadow A B01	6	RCL B01 Div 2	2.14	2.25
11907	2013-09-28	Snohomish United Black B01	2	WPFC White B01	2	RCL B01 Div 2	2.32	1.63
10957	2013-09-21	WA Rush B01	0	Snohomish United Black B01	3	RCL B01 Div 2	1.15	4.02
10418	2013-09-15	Snohomish United Black B01	6	Whatcom Rangers Gold B01	5	RCL B01 Div 2	1.93	2.20
9046	2013-09-07	Snohomish United Black B01	6	Westsound FC Red B01	0	RCL B01 Div 2	3.44	0.96
7395	2013-08-18	Snohomish United Black B01	6	MVP Rapids Navy B01	0	Bigfoot Gold U12	4.58	0.75
7396	2013-08-18	NWN Red B01	1	Snohomish United Black B01	4	Bigfoot Gold U12	1.48	1.97

	date	home		away		venue	pred.home	pred.away
7001	2013-08-17	Crossfire Select Perry B01	2	Snohomish United Black B01	7	Bigfoot Gold U12	0.34	14.16
6758	2013-08-16	Eastside FC Blue B01	1	Snohomish United Black B01	10	Bigfoot Gold U12	0.34	9.83
6662	2013-08-15	Crossfire Select Nakamura B01	1	Snohomish United Black B01	4	Bigfoot Gold U12	0.66	5.79
4443	2013-07-22	Snohomish United Black B01	2	PacNW Maroon B01	6	Nike Crossfire Challenge Gold U12	1.38	4.19
4186	2013-07-21	San Juan SC Lightning Blue B01	1	Snohomish United Black B01	2	Nike Crossfire Challenge Gold U12	1.88	1.72
3722	2013-07-20	Snohomish United Black B01	4	Whatcom Rangers Gold B01	1	Nike Crossfire Challenge Gold U12	1.93	2.20
3431	2013-07-19	Snohomish United Black B01	1	Crossfire Premier A B02	1	Nike Crossfire Challenge Gold U12	2.03	2.08
799	2013-06-09	Crossfire Premier C B01	1	Snohomish United Black B01	6	Snohomish United Invit Gold U12	0.83	2.83
800	2013-06-09	Snohomish United Black B01	3	Chilliwack FC Selects 2002B	1	Snohomish United Invit Gold U12	4.04	1.78
728	2013-06-08	West Vancouver Dev 2002B	1	Snohomish United Black B01	6	Snohomish United Invit Gold U12	0.56	5.04
730	2013-06-08	FC Alliance B B01	1	Snohomish United Black B01	10	Snohomish United Invit Gold U12	0.40	8.35